

“No Man Is an Island.”

- John Donne

Hawai'i
Pacific **REC**

Your EHR Meaningful Use Specialist

Let Hawai'i Pacific Regional Extension Center Be Your Bridge to Meaningful Use of EHRs.

The Hawai'i Pacific Regional Extension Center (HPREC) Technology Consultants understand the unique challenges of primary care providers (PCPs). They offer expertise in health information technology on national and local levels and are available to provide physicians with:

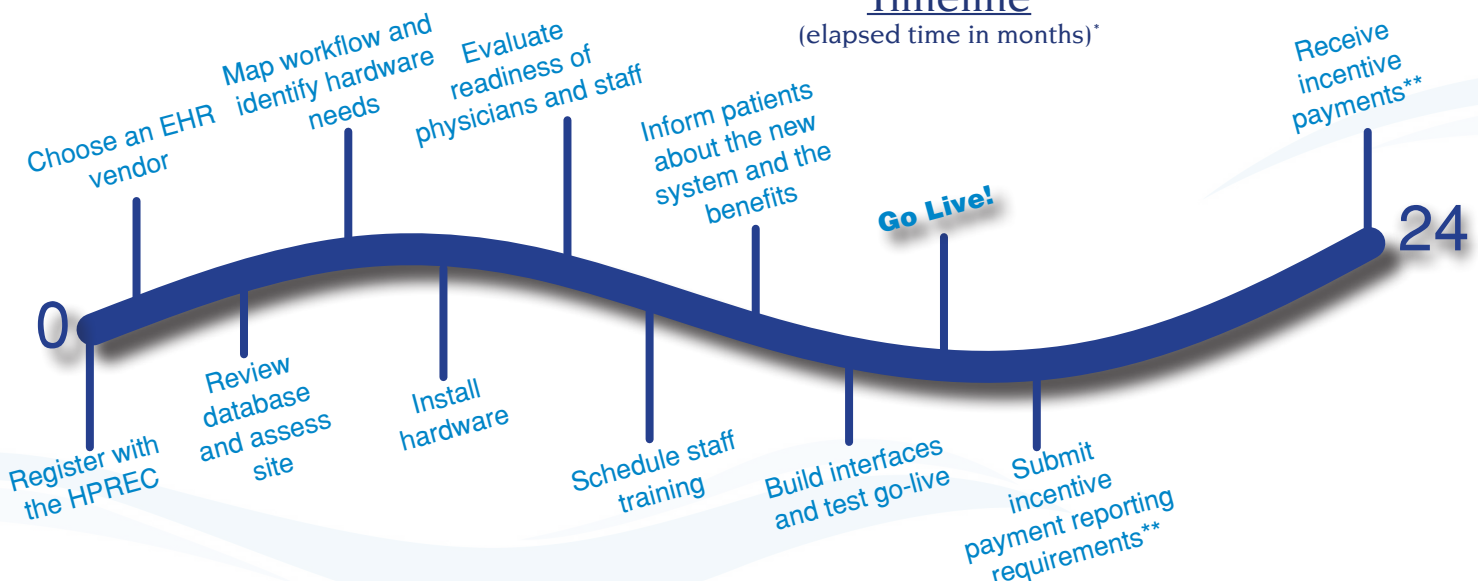
- Assistance with electronic health record (EHR) vendor selection and group purchasing negotiations,
- Guidance in practice and workflow redesign,
- Help preparing practices for interoperability and health information exchange,
- Expertise in privacy and security best practices, and
- Support in achieving Meaningful Use of EHRs and becoming eligible for EHR incentives.

The HPREC is committed to providing technical assistance to Hawai'i and Pacific Island health care professionals, including:

- Physicians, physician assistants, and nurse practitioners furnishing primary care
- Providers within medically under-served and under-insured communities
- Clinicians with the least resources
- Providers at Critical Access Hospitals (CAHs), Community Health Centers (CHCs), and Federally Qualified Health Centers (FQHCs)
- Individual providers and providers in small group practices

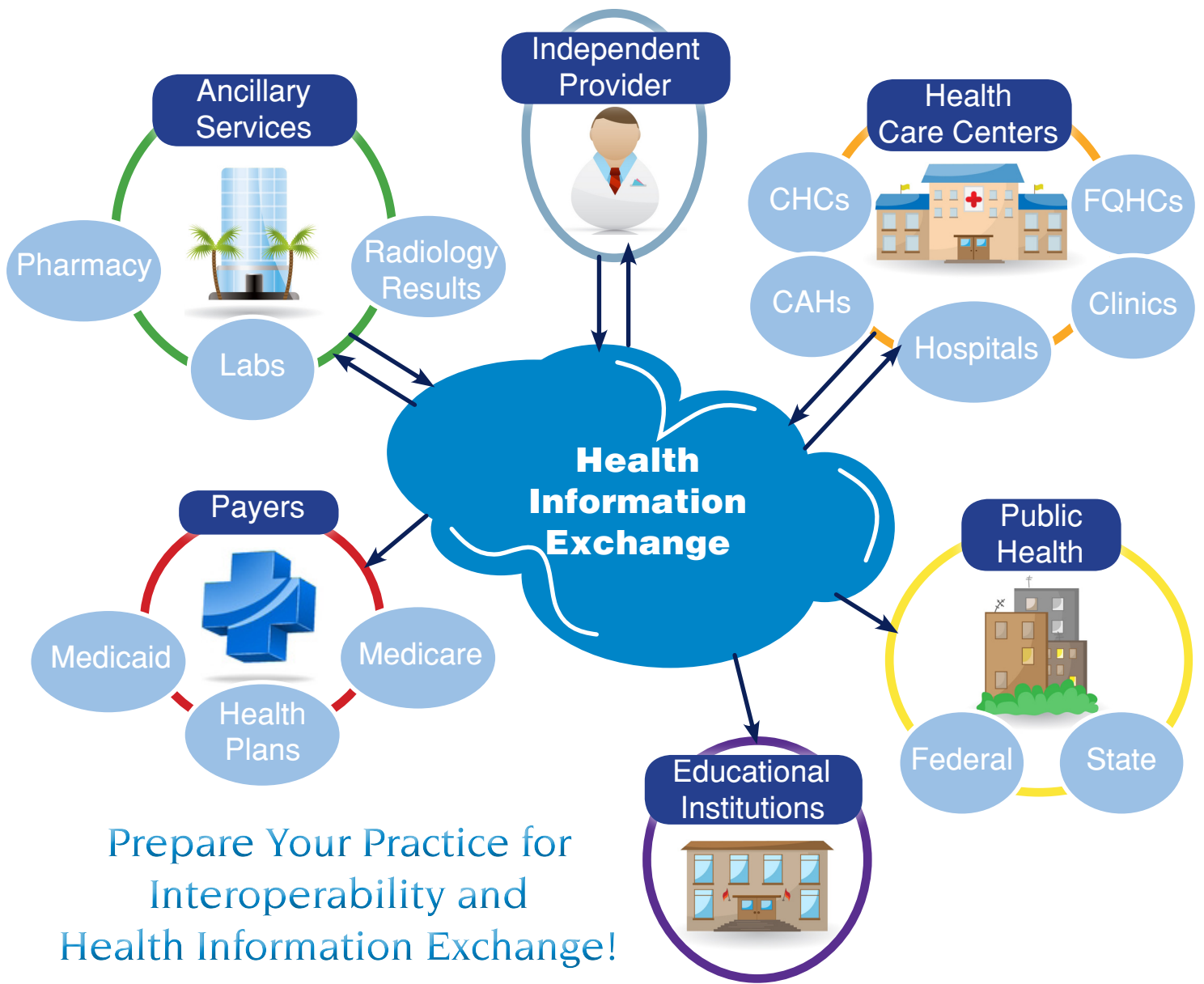
EHR Implementation Timeline

(elapsed time in months)*



*This is an estimated time frame. Every site is different, and implementation time will vary depending on a variety of factors.

** Eligible professionals (EPs) who adopt, implement, upgrade, or meaningfully use certified EHR technology in their first year of participation in the Medicaid incentive program and successfully demonstrate meaningful use in subsequent years may be eligible for an incentive payment of \$21,250. In subsequent years of payment, a Medicaid EP's incentive payment will be limited to \$8,500. Medicare EPs who successfully demonstrate meaningful use and receive Medicare EHR incentive payment in the first or second year of the program (2011 or 2012) may qualify to receive payments for the full five years. For more information on requirements and payment time frames, please visit www.cms.gov/EHRIncentivePrograms/ or call 808.441.1429.



Benefits to Health Information Exchange (HIE) and Health Information Technology (HIT):

- Improve care coordination and patient safety
- Offer providers the ability to access and download clinical data
- Uniquely identify and differentiate one individual from another
- Efficient delivery of patient lab results, medical notes, and radiology interpretations for use in clinical care
- Reduce redundancy in testing
- Lower costs for providers and patients
- Expedite prescription processes and facilitate the delivery of patient prescription history for medication management
- Help avoid misplaced information
- Decrease the amount of data entry and repetitive work for patients and providers
- Allow for more efficient response to emergencies
- Improve tracking of information that is accessed for patient and provider protection
- Protect information by storing it safely in an electronic format
- Support efforts in understanding public health needs and trends

For more information on the Hawai'i Health Information Exchange
or the Hawai'i Pacific Regional Extension Center,
please call 808-441-1429 or email info@hawaiihie.org.