



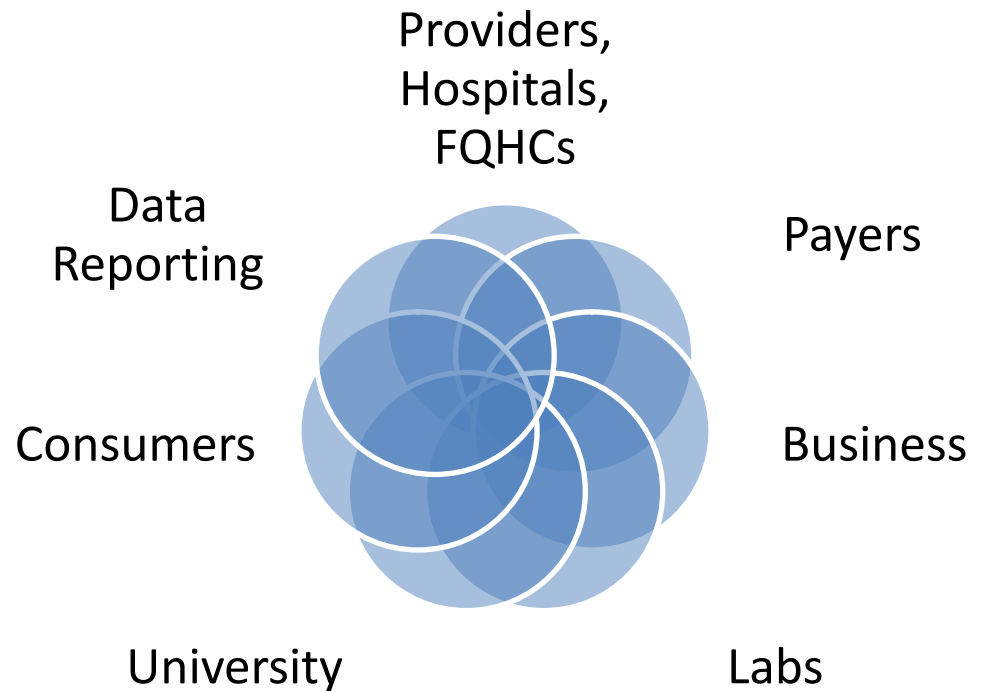
HPCA Meaningful Use Workshop October 29th, 2010

Christine Sakuda

Alan Ito

Who Is Hawai'i HIE?

- 22 member BoD
- Extensive HIT experience
- Broad community support
- A non-profit 501(c)(3)
- Became the State Designated Entity in Sept. 2009





John A. Burns School of Medicine
University of Hawai'i at Manoa



Hawai'i County
Beacon Community



Castle Medical Center



Overview of the State HIE Grant



- Purpose: Develop and implement a state HIE plan
- Grantor: Office of the National Coordinator for HIT (ONC)
- The State Designated Entity
- Federal Budget: \$5, 602,318
- Timeframe: Feb 2010 – Feb 2014
- 2-year technical requirements include: electronic labs, pharmacy, public health & quality reporting

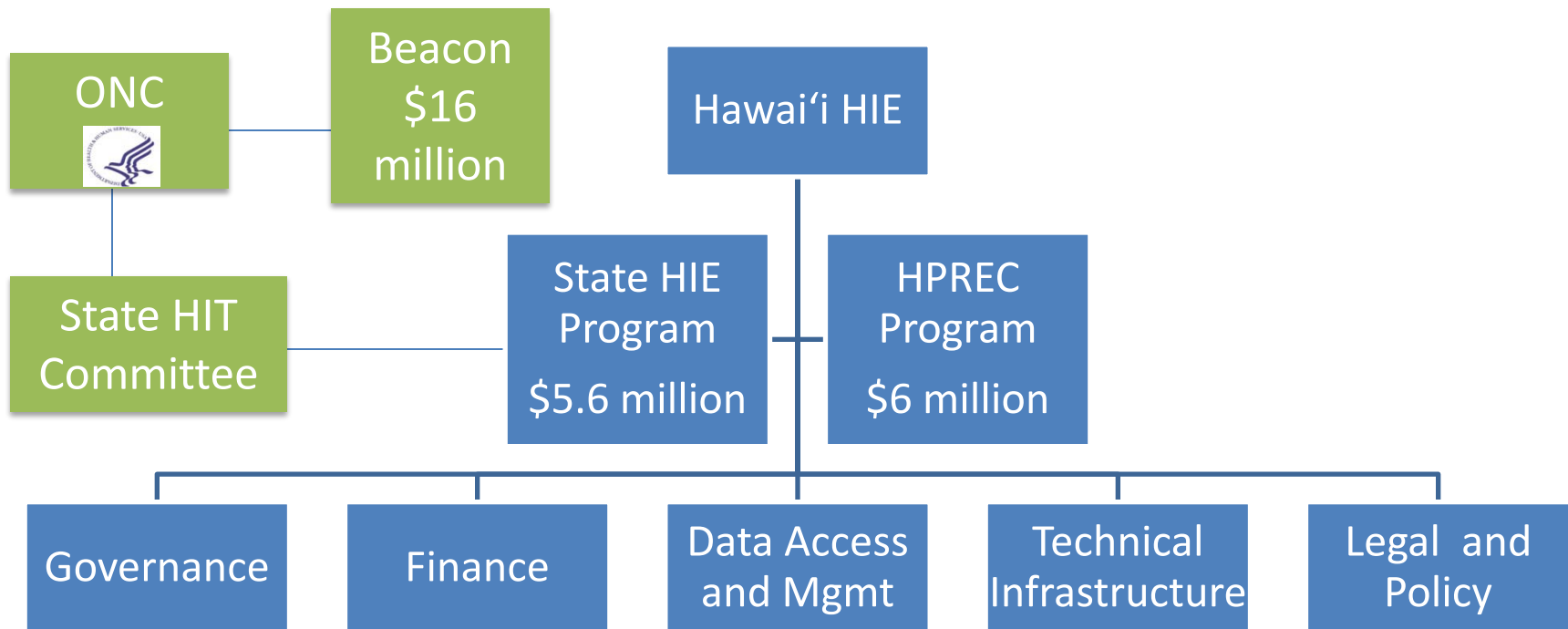


Mission

- To facilitate the exchange of health information that enables high quality and affordable health care statewide
- Core Values & Guiding Principles:
 - Inclusivity
 - Quality
 - Transparency
 - Privacy
 - Sustainability



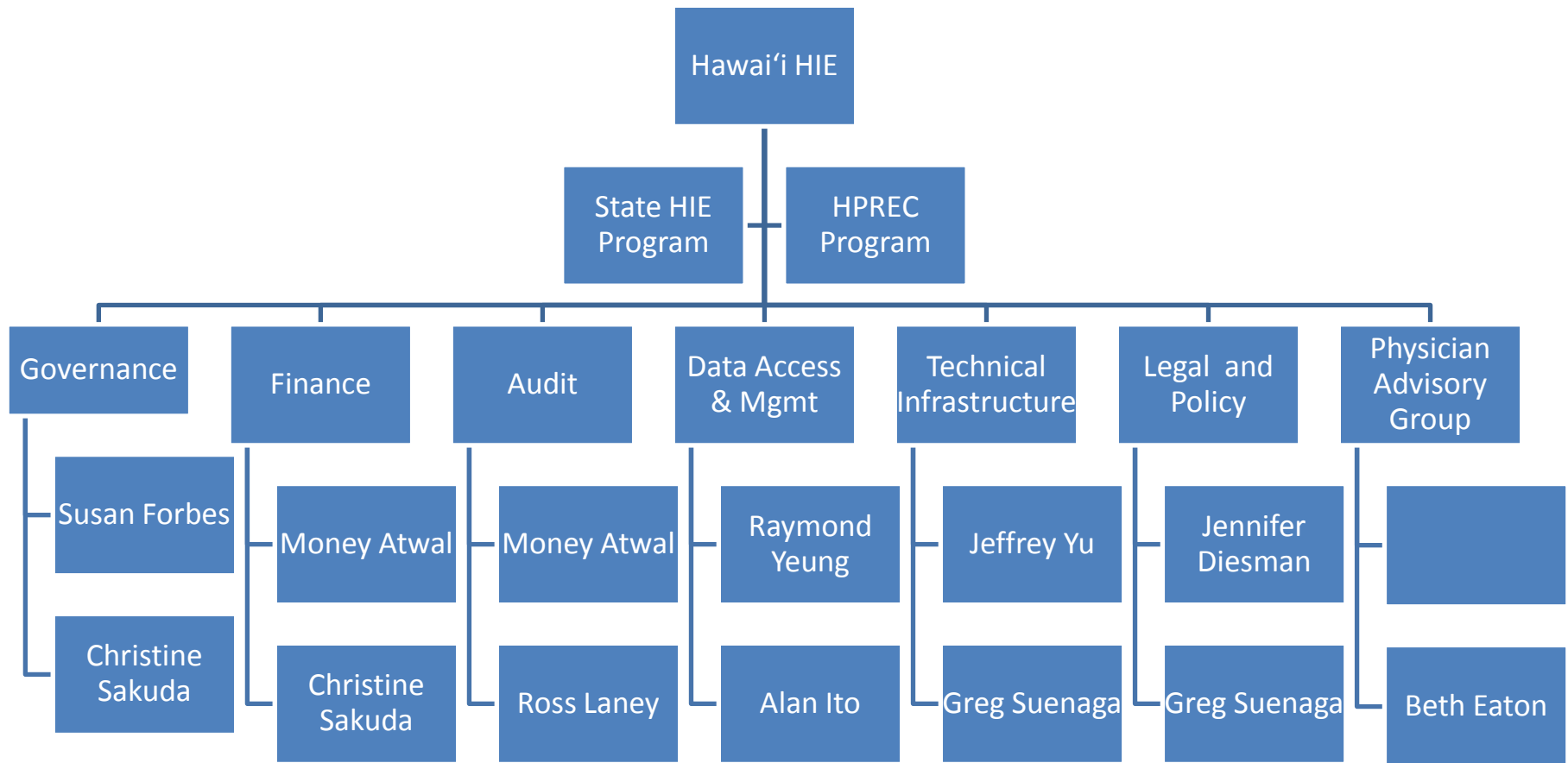
Programmatic Organizational Chart



State Coordinating Committee for Health IT

- Mark Anderson, State HIT Coordinator (Dept. of Budget & Finance)
- Lorrin Kim, Chief Planner for DoH
- Dr. Kenneth Fink, MedQuest Administrator, DHS
- Clyde Sonobe, DCCA
- Russ Saito, DAGS

Hawai'i HIE Board Committees

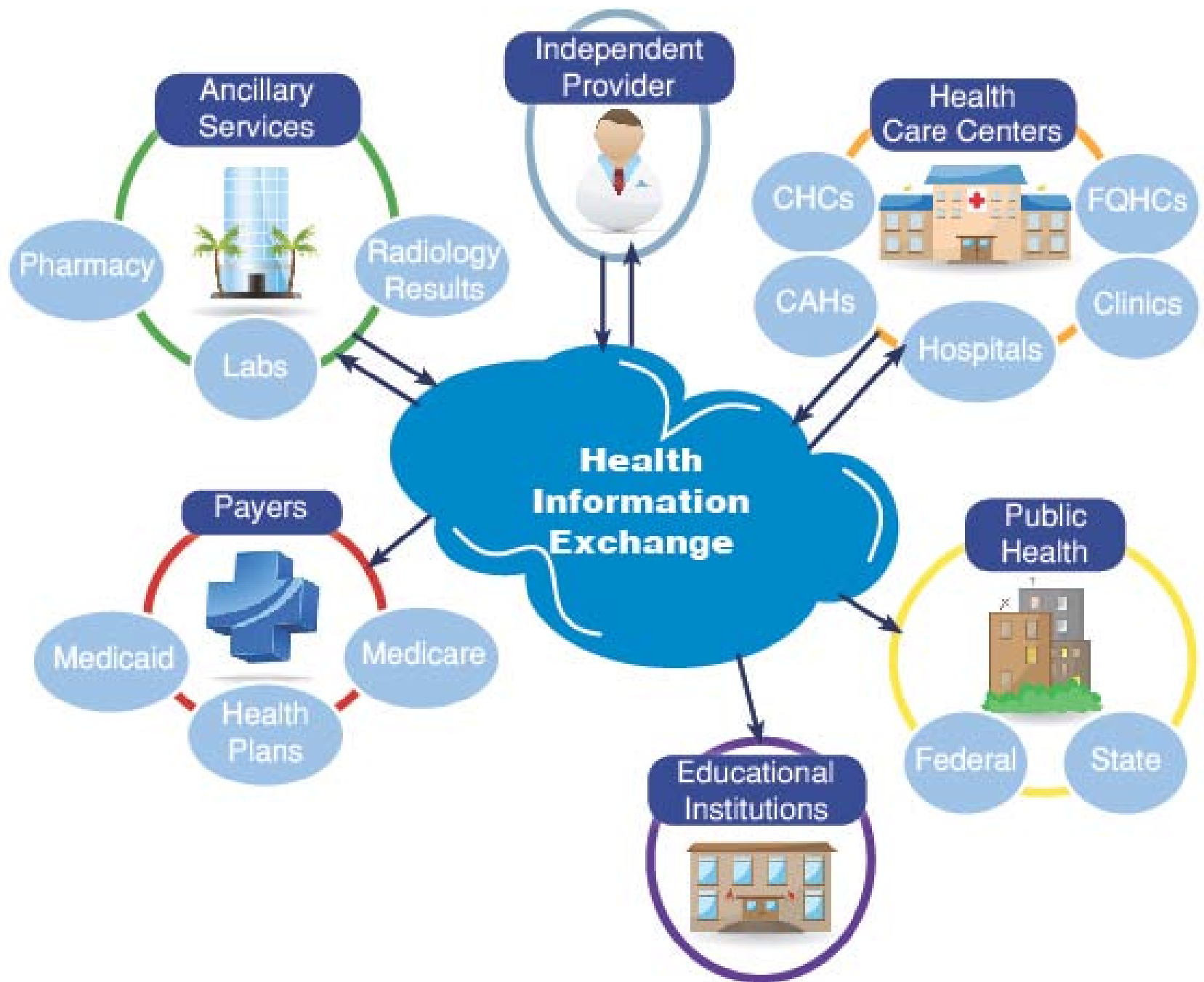


State HIE Project Timeline

- Sept. 2009 – became the SDE
- Sept. 2009 – submitted grant application
- Feb. 2010 – awarded
- Mar. 2010 – planning process approved
- Mar.-July 2010 – develop draft plan
- August 17th – Board approved Plan
- August 30th – State Coordinating Committee for HIT approved Plan
- August 30th – ONC received Plan from HHIE
- Sept. 10th – HHIE reviewed initial feedback from ONC
- **Oct. 31st – ONC-HHIE approval phase of plan**
- November 2010 – begin implementation



Over the next 4 years, we will oversee the development of a statewide HIE to improve the quality of health in Hawai'i.



Highlights of State HIE Plan



- Environmental Scan shows:
 - About 99% of the state's population has broadband coverage.
 - Most hospitals and FQHCs have components of electronic systems that provide segmented administrative and clinical support within an isolated environment.
 - An estimated 975 in-state active providers currently use or have implemented electronic prescribing systems, based on the latest Surescripts report.
 - In Hawai'i's major laboratories, over 80% of claims are processed electronically.
 - Independent physicians in Hawai'i show the lowest percentage of current capacity and utilization of EHR adoption and use.
 - 15% of rural pharmacies are not connected to an electronic ordering system, and there is no electronic notification process for refills.



Highlights of State HIE Plan cont.



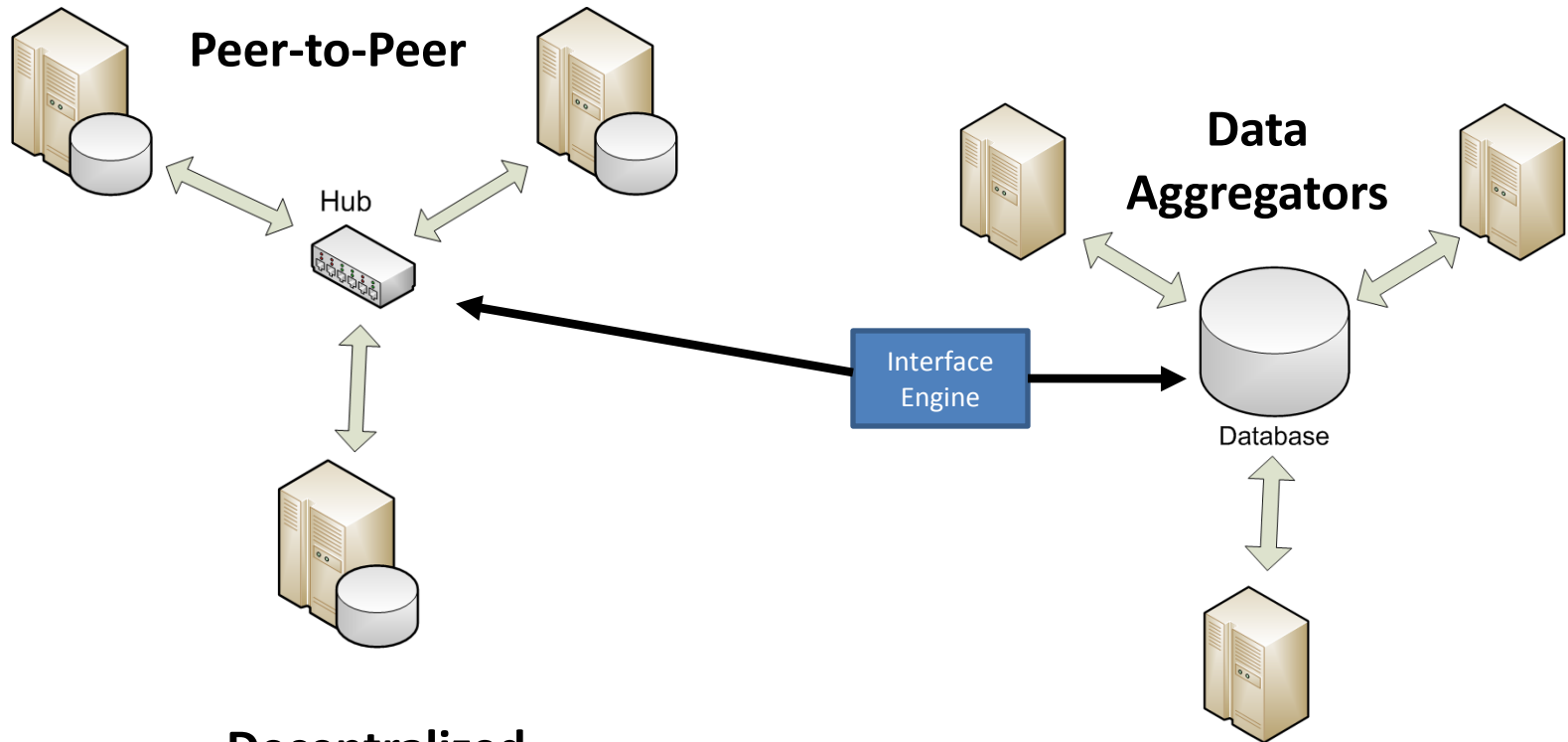
- The Plan has a service implementation schedule of two years.
- The system will be organized around the performance of a set of infrastructure requirements and functions.
- The State HIE Plan will analyze and fill Meaningful Use gaps.
 - Enable the 30% of labs that are not interfacing with EHR systems to participate
 - Aid the increased frequency of transmission of electronic scripts
 - Allow the 20% of organizations that are not able to share CCR/CCD information outside their walls to be able to do so



Highlights of State HIE Plan cont.

- Hawai'i HIE will create a technical infrastructure that will allow for interoperability.
- Hawai'i HIE is collaborating with the North Hawai'i HIE, the Hawai'i County Beacon Community Consortium, the Hawai'i Pacific Regional Extension Center, the State Coordinating Committee, and Hawai'i's school of medicine and community college system.

Hybrid Design



Decentralized

Data maintained at the source

Centralized

Data maintained at the source
and centrally maintained

HIE in an Emergency

George is vacationing in Hilo, Hawai'i island. One night while driving downtown, a pedestrian begins to cross the street in front of him. Attempting to avoid the pedestrian, he swerves to the left and hits a telephone pole.

George is in critical condition and is taken to the closest hospital ER. Dr. Lee brings George into the emergency room and provides the nurse with George's driver's license in order to identify him.

Fortunately, Dr. Lee is able to access George's electronic health records through the HIE and is alerted to George's allergy to penicillin. Dr. Lee is able to treat him quickly and efficiently, without causing any additional problems, and update his records with details from the accident.



State HIE Plan Contacts



- Gregory Suenaga, Project Director
 - gsuenaga@hawaiihie.org
 - 808-441-1310



- Christine Sakuda, Executive Director
 - csakuda@hawaiihie.org
 - 808-441-1313